



ZXP Series 9 Retransfer Card Printer

Pairing outstanding print quality with fast print speeds

Extending Zebra's line of card printers, the ZXP Series 9™ is a retransfer card printer specifically engineered for high-security applications. With industry-leading throughput enabling you to print more cards faster and with outstanding quality. Take control with the printer's user-selectable print quality mode, allowing you to optimize for print speed or sharpen print quality. And, the dual-sided, simultaneous retransfer process provides best-in-class printing, encoding and laminating throughput.



Zebra OneCare Service

Increase printer uptime, and reduce lost productivity and unbudgeted repair costs, by selecting a Zebra OneCare™ service agreement. A cost-effective means of planning and budgeting your annual maintenance expenditures, your agreement ensures that trained Zebra® technicians will bring your printer back to factory specifications. Zebra offers a variety of plans to fit your budget and business needs.

Genuine Zebra Supplies

The choice of card-printer supplies is critical: supplies are the number one factor impacting the reliability and consistency of card printing, as well as print quality. Genuine Zebra™ supplies meet stringent quality standards. Our supplies deliver consistent results with every print job and minimize wear and tear on critical printer parts—resulting in reduced overall maintenance costs.

Zebra's PVC and Composite PVC cards are guaranteed ISO-compliant. Zebra offers cards with tamper-resistant embedded holograms, magnetic stripes and smart chips—which can be encoded on-demand with a Zebra card printer—for maximum security and functionality. Select from Zebra's portfolio of stock cards, or design a unique custom card to best reflect your brand or meet your organization's security needs.

Quality, Dependability, Flexibility and Speed

Government, Education, Retail and Hospitality industries have an ever-increasing focus on security, a need for flexibility and a continual demand for efficiency.

Outstanding Print Quality + Fast Print Speeds

Produce durable, long-lasting, tamper-resistant cards with the sharpest photo-like image quality that boasts rich, consistent colors and strikingly sharp resolution. Industry-leading throughput allows you to print more cards faster—even with dual-sided lamination and encoding.

For more information about the ZXP Series 9 Retransfer Card Printer, visit www.zebra.com/zxpseries9 or access our global contact directory at www.zebra.com/contact

Valuable Cost Savings + Reduced Waste

Ensure security and reduce the likelihood of forgeries with best-in-class retransfer and laminate technology — including holographic images. Experience extremely low cost-per-card operation with Zebra's patented waste-free laminate technology featuring linerless media with a single core and no carrier. Reduce waste by 50% and save up to 40% in costs compared to the competition.

Smart Design + Flexible, Hassle-free Operation

Zebra's patented dual-sided, simultaneous retransfer printing design eliminates the need for the printer to mechanically flip cards during production. This engineering makes throughput even faster, and it reduces the risk of costly mechanical errors and card jams.

Featuring multiple connectivity options including standard USB and Ethernet, along with optional Wi-Fi®(US and EU only), the ZXP Series 9 gives you the added flexibility you need to relocate your printer anywhere within your network. And, the printer's new user-selectable print quality mode gives you more options and control.

Exclusive Color Predictive Technology

Zebra's exclusive Color Predictive Technology (CPT) delivers superior, photo-like image quality. Based on patented image-processing algorithms, Zebra's CPT constantly monitors printing and instantaneously adapts printer settings to automatically produce the highest print quality—time after time, card after card.

The Features You Need In Your Card Printer

Time is precious and budgets are carefully managed to avoid waste. Spending resources on additional printers, operator time and supplies is costly. Zebra engineered the ZXP Series 9 with you in mind—creating new ways to save you time and money.

Keep Your Printers Up and Running

Reduce printer downtime with Near Field Communication (NFC) technology and QR Codes that give you instant access to printer information and support. Obtain on-the-spot guidance and troubleshooting tips through the dedicated web support page and webpage launching features — including online help, how-to videos and printer information resources.

Benefit From Added Security Features

Reduce the likelihood of counterfeit cards and unauthorized printer use with printer-enabled security features. Add even more security and counterfeit prevention/tampering with custom Zebra supplies such as specialty holographic laminates.

Get The Support You Need

With Zebra's free card testing service you get complimentary card-testing support and guidance from skilled Zebra professionals.

Ensure The Highest Quality Right From the Start

"First card out" card quality improvements give you consistent, quality cards and reduce waste.

Setup and Configure With Ease

Along with user interface improvements, you'll also enjoy added features and benefits including a certified Windows® driver and an enhanced toolbox for a consolidated view of all aspects of the ZXP Series 9 printer—which together make it easier to set up and configure.

Help Your Printers Do Even More

Add optional features like magnetic stripe and smart card encoding, along with Zebra's suite of software and SDK options for the best and easiest application integration options.

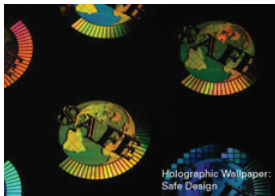
Zebra's Patented Waste-Free Stock and Custom Laminates Deliver Durability and Security

Benefits of Laminates



All printed plastic cards containing personal information, which is especially important in Government and Higher Education markets, are subject to counterfeiting, alteration, duplication and tampering. A protective film—commonly referred to as a laminate—can be applied to cards during the printing process, adding an extra layer of security and extending card life up to 5-10 years.

Stock Laminates



Zebra's stock laminates give your printed cards security, protection and extended card life for a range of card applications in various industries—including Higher Education, Government, Hospitality, Retail, Manufacturing, Transportation and Logistics, Healthcare and Service Bureaus.

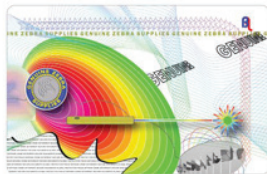
Stock laminates give you:

- Tamper-resistant and anti-counterfeiting holographic features to protect against alteration and duplication.
- Protection of card images, colors and printed data against fading due to UV rays and from scratching due to daily wear and tear.

You can purchase any of Zebra's clear and holographic stock laminates with:

- No minimum order
- No origination fee
- Fast delivery

Custom Laminates



For added security, Zebra laminates can also be embedded with a broad range of customizable security elements including visual holograms, micro-text, UV fluorescent images, guilloche patterns and metallic inks. Customize your laminate order to include your company logo and name or other unique images or text to further prevent tampering or counterfeiting. Partner with Zebra to create art for your design.

Before you place your custom laminate order, please remember:

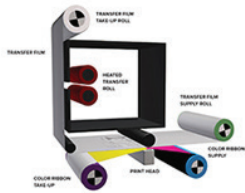
- Custom laminates have a minimum order quantity of 50 rolls per side per order.
- Standard lead-time for custom orders is up to 12 weeks once the artwork is approved and your purchase order is submitted.
- There is a one-time origination fee per laminate patch design. See your Zebra account representative for details.

For additional information on stock and custom laminates, including design support, please see our Custom Laminates Brochure or contact your Zebra sales representative.

Continued on following page

(continued)

Retransfer Printing Technology Highlights



Traditional direct-to-card printers use a printhead that prints through a ribbon directly onto the card. Retransfer printers print onto a flexible, transparent film that is then thermally bonded to the card creating a more durable, scratch-resistant product. This retransfer technology produces images with optimal quality that are more vibrant and saturated, even on uneven card surfaces such as key tag or smart cards.

Benefits of Zebra's Innovative Retransfer Card Printer



- Higher image quality with vibrant, rich colors.
- The ability to print on uneven card surfaces such as smart cards.
- True edge-to-edge printing (via over-the-edge printing) with the ZXP 9. Traditional card printers leave a white border at the edges of the card.
- The ability to print on non-PVC cards. Direct-to-card printers require a dye-receiving surface, which is not available on all non-PVC cards.
- More durable and abrasion-resistant cards that don't require an additional overlay or varnish. Built-in fraud protection with inherently tamper-evident film.

Advantages of Zebra's Innovative Retransfer Card Printer



Outstanding Print Quality: Zebra's exclusive Color Predictive Technology based on patented image-processing algorithms compensates for image errors normally caused by high printing speeds—enabling photo-quality images and print resolution even at increased print speeds.

Industry-leading Print Speeds: Zebra achieves print speeds that exceed any other retransfer printer, and that are comparable to many of the fastest direct-to-card printers on the market today. Zebra's patented image transfer process applies film to both sides of the card in a single pass, drastically reducing the print time.

Exceptional Cost Savings: The ZXP Series 9 featuring Zebra's wastefree laminate technology gives you an extremely low cost-per-card operation. Eliminate up to half the typical waste with our linerless media with a single core and no carrier.

Specifications

Printing

- Dye diffusion retransfer
- Full color or monochrome retransfer printing
- Single- and dual-sided printing
- Max Print Speed Single-Side*: 180 cph (with 300 dpi)
- Max Print Speed Dual-Sided*: 190 cph (with 300 dpi)
- Photo-quality images
- Over-the-edge printing on standard CR80 media

Standard Features

- USB and Ethernet connectivity
- Single-card feed capability
- 150 card capacity feeder (30 mil)
- 15 card capacity reject hopper (30 mil)
- 100 card capacity output hopper (30 mil)
- i Series™ intelligent media technology
- Auto-calibration of media
- 21-character, 6 line LCD operator display
- Print Resolution: printers available with 300 dpi
- 2GB memory standard
- Lifetime warranty on printhead
- 2-year limited warranty on printer
- Microsoft® Windows certified drivers

Options and Accessories

- Laminator—single-sided and dual-sided
- Zebra OneCare service programs
- 802.11b/g wireless connectivity
- Card input hopper (150 cards 30 mil)

Encoding Options and Specifications

- ISO 7816 Smart Card Contact Station for third-party external contact encoders
- Magnetic stripe encoder—AAMVA and ISO 7811 (new and pre-encoded; tracks 1, 2, and 3; high and low coercivity)
- Combined MIFARE® ISO 14443 A & B (13.56 MHz) contactless, ISO 7816 Contact Encoder PC/SC compliance

Laminator Specifications

- Single-or dual-sided lamination option (with dual-sided printer only)
- GSA FIPS 201 approved (dual-sided lamination)
- Uses Zebra True Secure i Series laminates only
- Laminate for the top and bottom sold separately
- Custom-coded laminates available
- Custom holographic laminates available

Zmotif Software

- ZMotif SDK support and sample code
- Windows 7® (32 and 64 bit), Windows Server 2008 (32 and 64 bit), Windows 8 ® (32 and 64 bit), Windows 8.1® (32 and 64 bit), Windows Server 2012 (64 bit), Windows 10 (32 and 64 bit)
- CardStudio card design and issuance software

Driver Features

- Graphical card orientation setting to visualize card printing setup and configuration
- Card source and card type selection
- Complete graphical control over area and element selection of black extraction parameters
- Auto sensing of ribbon type, laminator and smart card encoding options

Toolbox Utility Features

- Printer configuration tools and utilities for complete control over all printer functions and features
- Optional password protection settings and user role-based security settings prevent accidental or unauthorized driver or printer configuration changes
- Complete technology card management enables setup and testing of all printer and encoder features and functionality
- Printer test cards and diagnostics utilities ensure error-free printing and fast troubleshooting capabilities

ZMOTIF SDK

- Downloadable SDK for custom applications
- SDK enables third parties to quickly add advanced print and encoding features to the ZXP Series 9 printer
- Capabilities include direct access to PC/SC Smart Card encoder driver and job control over print job specifications
- Support for Uv and inhibit ribbon panel features and capabilities

Supplies

- Zebra i Series intelligent technology uses RFID tags to authenticate and automate color ribbons, transfer film and laminate
- Specially designed cleaning supplies simplify preventative maintenance

True Colours i Series Ribbon

- YMCK 4 panel: 625 images/roll
- YMCKK 5 panel: 500 images/roll
- YMCUVK 5 panel: 500 images/roll
- YMCKI 5 panel: 500 images/roll
- YMCKKI 6 panel: 415 images/roll
- Monochrome black: 2500 images/roll

True Colours i Series Transfer Film

- Clear: 1250 single-sided/625 dual-sided cards/roll

True Secure i Series Laminate

- Linerless, waste-free 1.0 mil top and bottom laminate: 625 images/roll
- Laminate types: clear, magnetic stripe, smart card, and holographic designs
- Custom laminate with registered or wallpaper holographic images available on request

Markets and Applications

Government

- U.S. Federal Government IDs
- Government IDs
- Government-issued IDs and Cards
- ID and Access Control

Education

- Student and Staff ID and Access Control

Retail and Hospitality

- ID and Access Control
- Personalized Gift, Membership and Loyalty Cards
- Smart Cards in Travel, Gaming and Entertainment

Transportation and Logistics

- ID and Access Control

Manufacturing

- ID and Access Control

Service Bureaus

- Employee, Student IDs
- Personalized Gift, Membership and Loyalty Cards
- Other Customized Cards

PRODUCT SPEC SHEET

ZXP SERIES 9 RETRANSFER CARD PRINTER

Card Specifications

- Card thickness: 30 mil
- Card size: ISO 7810 format, Type ID-1, CR-80 size
- Card material: PVC and composite, ABS cards, PET, PET-G, and Teslin® composite**
- Specialty cards: transparent (IR-blocked) or translucent card 30 mil (clear and colored)**
- Technology cards: contact and contactless smart cards, UHF cards**

Communications Interfaces

- USB 2.0
- USB supports plug-and-play printer identification
- 10/100 Ethernet
- 802.11 b/g wireless connectivity

Electrical

- Auto-switching single-phase AC power
- 100V~240V AC and 50-60 Hz

Physical

- Height (w/ card hoppers): 13.2"/334 mm
- Width (w/ card hoppers): 18.75"/476 mm
- Width (w/ card hoppers, w/ laminator): 30.75"/781 mm
- Depth: 20.4"/519 mm
- Weight (printer only): 27.5 lbs./12.5 kg
- Weight (printer, laminator): 44 lbs./20 kg

Environmental

- Operating Temperature: 59° F/15° C to 95° F/35° C
- Storage Temperature: 23° F/-5° C to 131° F/55° C
- Operating Humidity: 20% to 80% inclusive, non-condensing
- Storage Humidity: 10% to 90% inclusive, non-condensing
- Shipping Temperature: -40° F/-40° C to 140° F/60° C
- Shipping Humidity: 10% to 90% inclusive, non-condensing
- Media should not be above 140° F/60° C for longer than 200 hours, and above 90% relative humidity at 104° F/40° C for longer than 100 hours

NOTE: For optimum print quality and printer performance, use of Genuine Zebra supplies is recommended.

* Print speed based on click to drop, average print coverage, with USB connectivity, card per hour (cph)

** Please contact your Zebra reseller for qualification of cards



NA and Corporate Headquarters
+1 800 423 0442
inquiry4@zebra.com

Asia-Pacific Headquarters
+65 6858 0722
contact.apac@zebra.com

EMEA Headquarters
zebra.com/locations
contact.emea@zebra.com

Latin America Headquarters
+1 786 245 3934
la.contactme@zebra.com